



Rainfall and Generation Data for Broompower

From Start of operation to 30th September 2020

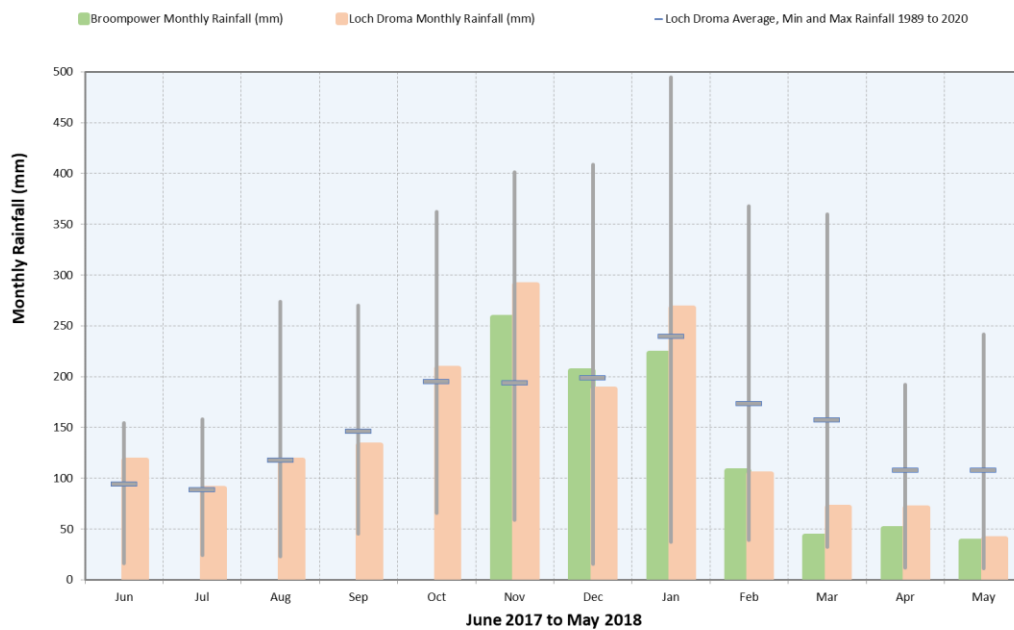
Paul Copestake

22nd October 2020

Contents

- 1 Annual Rainfall Data – Comparison Broompower Rainfall against Rainfall data from Loch Droma (SEPA rain gauge operated since 1989)
- 2 Broompower – Monthly and annual summary for each year of operation.
- 3 Monthly Graphs of River Flow and Generated output

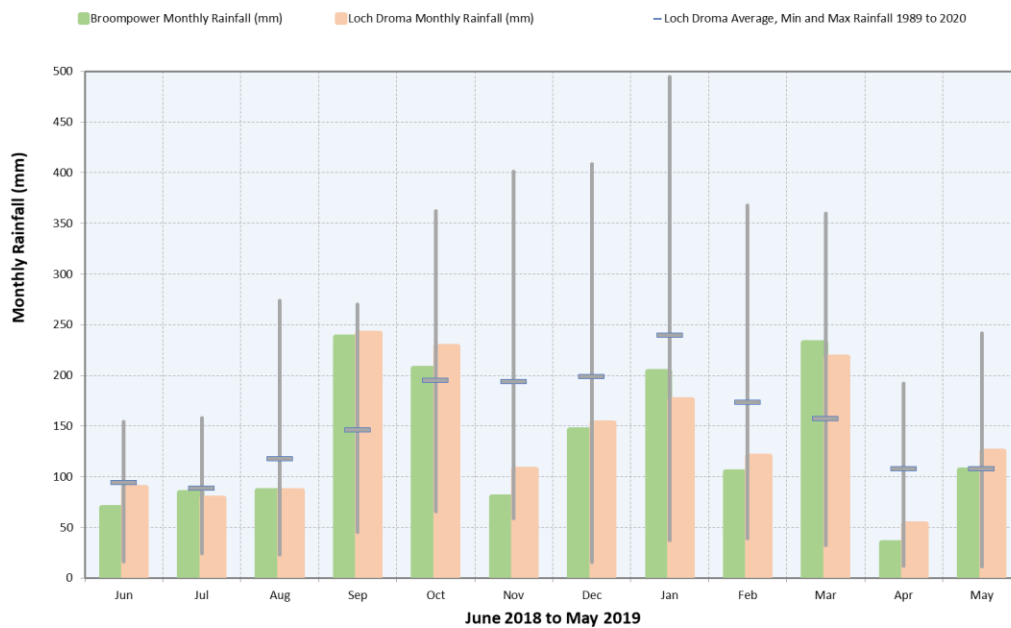
Year 1 of Operation - Monthly Rainfall - Loch Droma and Broompower



2017-2018	Jun	Jul	Aug	Sep	Oct	Nov	Dec	Jan	Feb	Mar	Apr	May
Loch Droma Monthly Rainfall (mm)	117.6	89.8	117.8	132.6	207.8	290.2	187.6	267.2	104	71.4	70.8	40.2
Broompower Monthly Rainfall (mm)						258.5	205.5	223	107	43	50	38
Loch Droma Average Rainfall 1989 to 2020	93.8	88.1	117.1	146.1	195.0	193.6	198.3	239.1	173.1	157.2	107.5	107.5
Droma Percentage of LTA	125	102	101	91	107	150	95	112	60	45	66	37
Droma Monthly Rainfall Rank out of 31						7	18	12	26	27	24	27

2017-2018 (Nov to May)	
Loch Droma Total Rainfall (mm)	1031.4
Broompower Total Rainfall (mm)	925.0
Loch Droma Average Rainfall 1989 to 2020	1176.3
Droma Percentage of LTA	90%
Generation Year Rank (out of 29)	(20) part

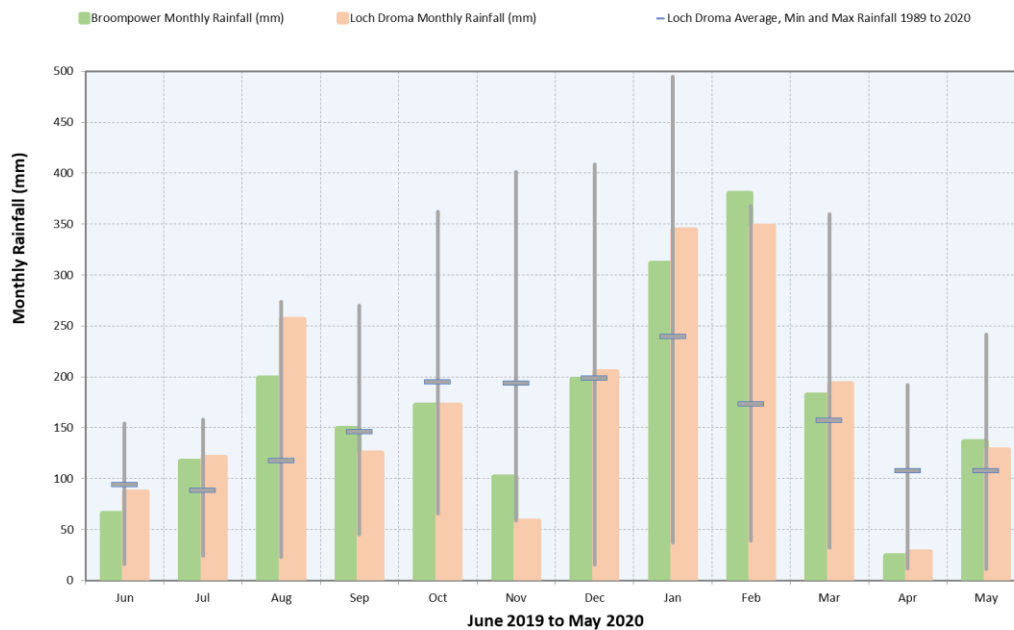
Year 2 of Operation - Monthly Rainfall - Loch Droma and Broompower



2018-2019	Jun	Jul	Aug	Sep	Oct	Nov	Dec	Jan	Feb	Mar	Apr	May
Loch Droma Monthly Rainfall (mm)	89.4	78.8	86.2	241.4	228.8	107.4	152.8	176	120	218.2	53.2	125.4
Broompower Monthly Rainfall (mm)	69.5	84.5	86.5	237.5	207	80	146	203.5	105	232	35	106.6
Loch Droma Average Rainfall 1989 to 2020	93.8	88.1	117.1	146.1	195.0	193.6	198.3	239.1	173.1	157.2	107.5	107.5
Droma Percentage of LTA	95	89	74	165	117	55	77	74	69	139	50	117
Droma Monthly Rainfall Rank out of 31	18	18	18	4	8	25	20	22	19	8	29	10

2018-2019	
Loch Droma Total Rainfall (mm)	1677.6
Broompower Total Rainfall (mm)	1593.1
Loch Droma Average Rainfall 1989 to 2019	1816.5
Droma Percentage of LTA	95%
Generation Year Rank (out of 29)	21

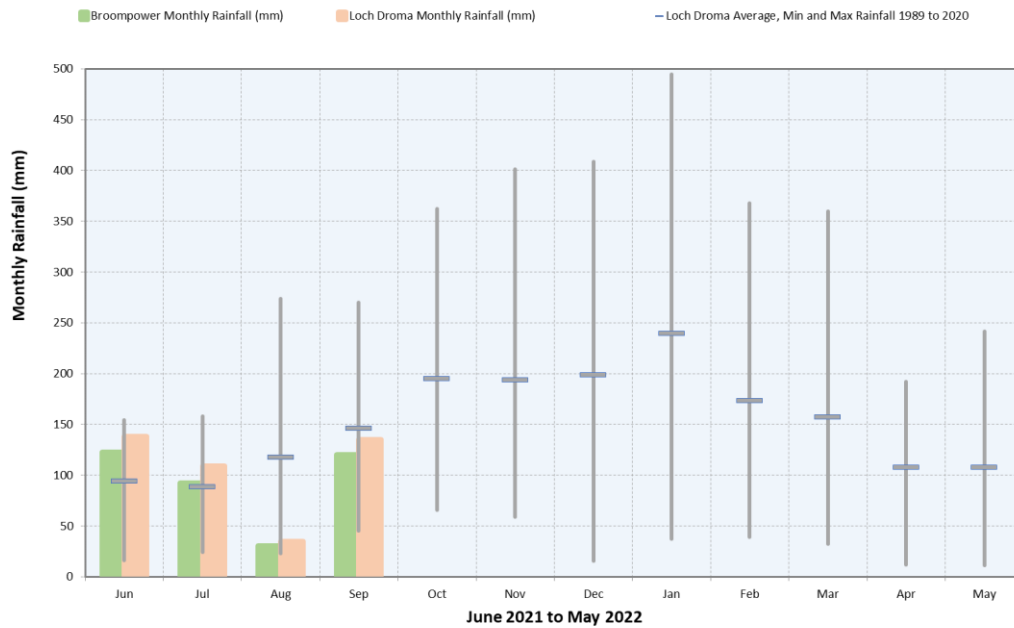
Year 3 of Operation - Monthly Rainfall - Loch Droma and Broompower



2019-2020	Jun	Jul	Aug	Sep	Oct	Nov	Dec	Jan	Feb	Mar	Apr	May
Loch Droma Monthly Rainfall (mm)	87	121	256.2	125.2	172	58.4	205	344	348	193	28	128.4
Broompower Monthly Rainfall (mm)	65.6	117.4	198.8	149.2	172	101.8	197.4	311.6	380.2	182.2	24.6	136.6
Loch Droma Average Rainfall 1989 to 2020	93.8	88.1	117.1	146.1	195.0	193.6	198.3	239.1	173.1	157.2	107.5	107.5
Droma Percentage of LTA	93	137	219	86	88	30	103	144	201	123	26	119
Droma Monthly Rainfall Rank out of 31	20	6	2	19	20	31	14	4	2	9	30	9

2019-2020 (Jun to Sept)	
Loch Droma Total Rainfall (mm)	2066.2
Broompower Total Rainfall (mm)	2037.4
Loch Droma Average Rainfall 1989 to 2019	1816
Droma Percentage of LTA	132%
Generation Year Rank (out of 29)	7

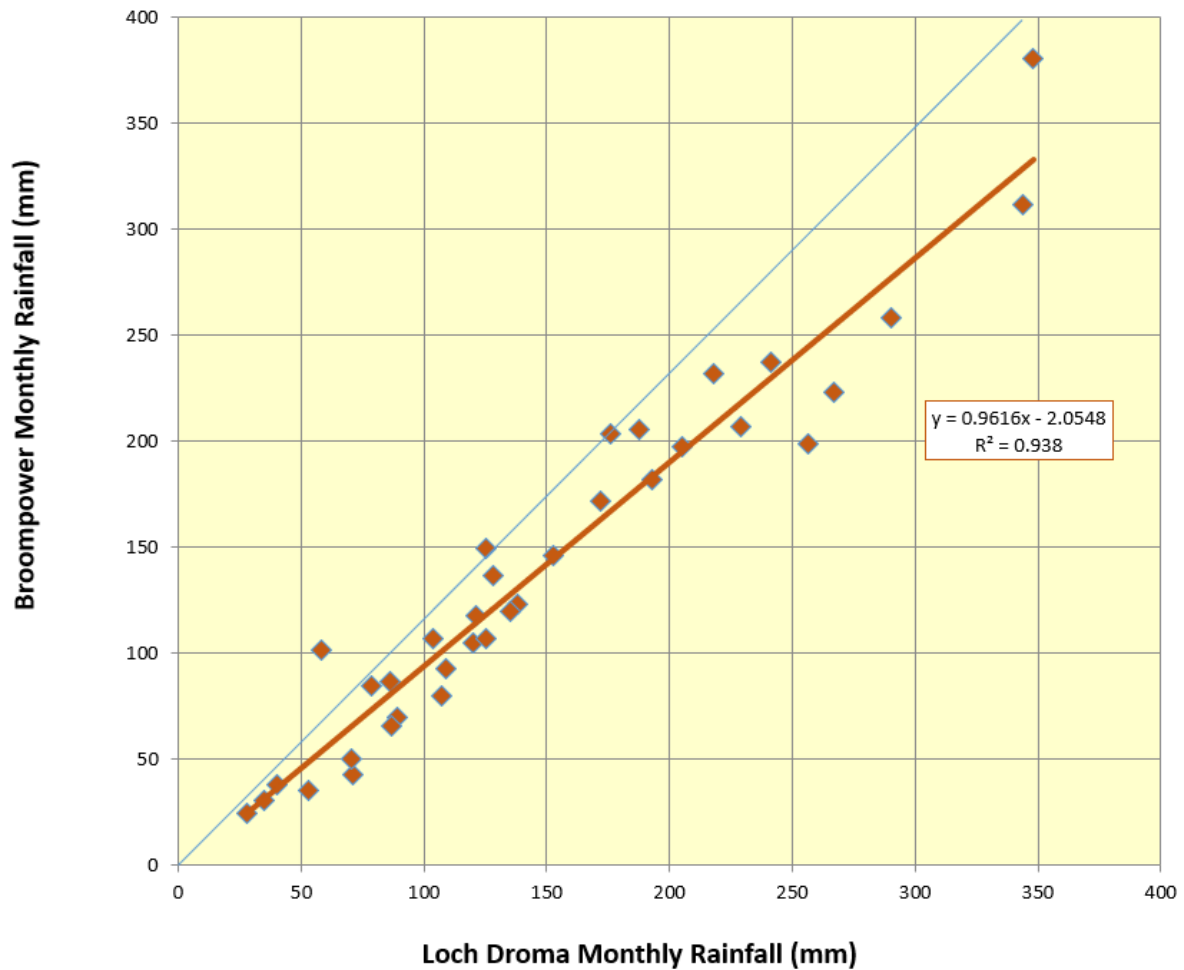
Year 4 of Operation - Monthly Rainfall - Loch Droma and Broompower



2020-2021	Jun	Jul	Aug	Sep	Oct	Nov	Dec	Jan	Feb	Mar	Apr	May
Loch Droma Monthly Rainfall (mm)	138	109.2	35	135								
Broompower Monthly Rainfall (mm)	122.8	92.6	30.4	120								
Loch Droma Average Rainfall 1989 to 2020	93.8	88.1	117.1	146.1	195.0	193.6	198.3	239.1	173.1	157.2	107.5	107.5
Droma Percentage of LTA	147	124	30	92								
Droma Monthly Rainfall Rank out of 31	2	8	30	15								

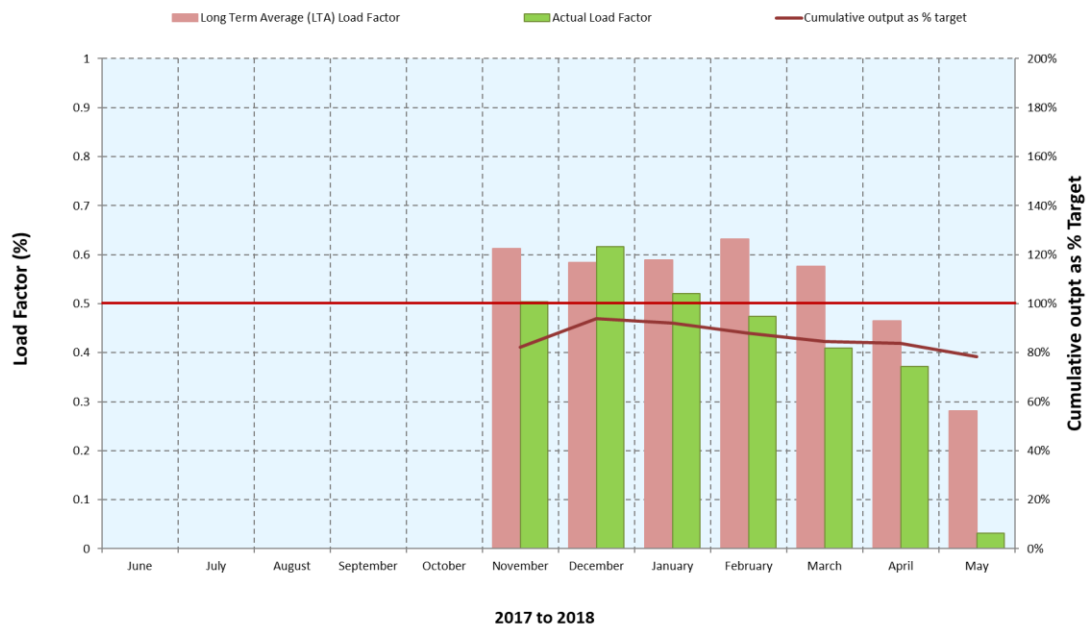
2020-2021 (Jun to Sept)	
Loch Droma Total Rainfall (mm)	417.2
Broompower Total Rainfall (mm)	365.8
Loch Droma Average Rainfall 1989 to 2019	445.2
Droma Percentage of LTA	87.7%
Generation Year Rank (out of 29)	n/a

Comparison BroomPower v Loch Droma Rainfall Nov 2017 to Sept 2020



Income from Generation (£ per kWh)				
From	To	FIT	Electric	total
Start	31/03/2019	0.1600	0.0575	0.2175
01/04/2019	22/04/2020	0.1778	0.0646	0.2424
22/04/2020		0.1778	0.0550	0.2328

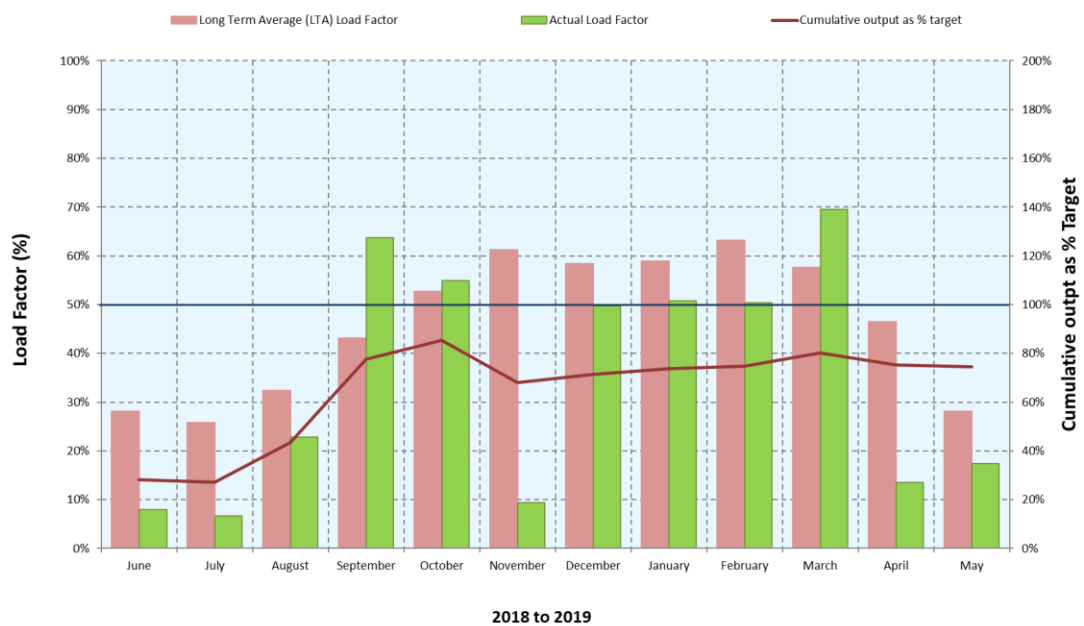
Broompower - 2017 to 2018, Year 1 of Operation - Performance



2017-2018	Jun	Jul	Aug	Sep	Oct	Nov	Dec	Jan	Feb	Mar	Apr	May
Monthly Generation KWH						36,260	45,903	38,718	31,892	30,491	26,783	2,366
Monthly target to generate 405000 KWH/Y						44,141	43,411	43,851	42,484	42,864	33,453	20,975
Monthly Income						£7,887	£9,984	£8,421	£6,936	£6,632	£5,825	£515
Actual Load as a % of LTA						18%	23%	19%	16%	15%	17%	2%
Cumulative output as % target						82%	94%	92%	88%	85%	84%	78%

2017-2018	Total
Total Generation KWH	212,413
Annual Target 405000 KWH (See Business Plan)	271,179
Annual Income (calculated from output)	£46,200
Actual as percentage target	78%

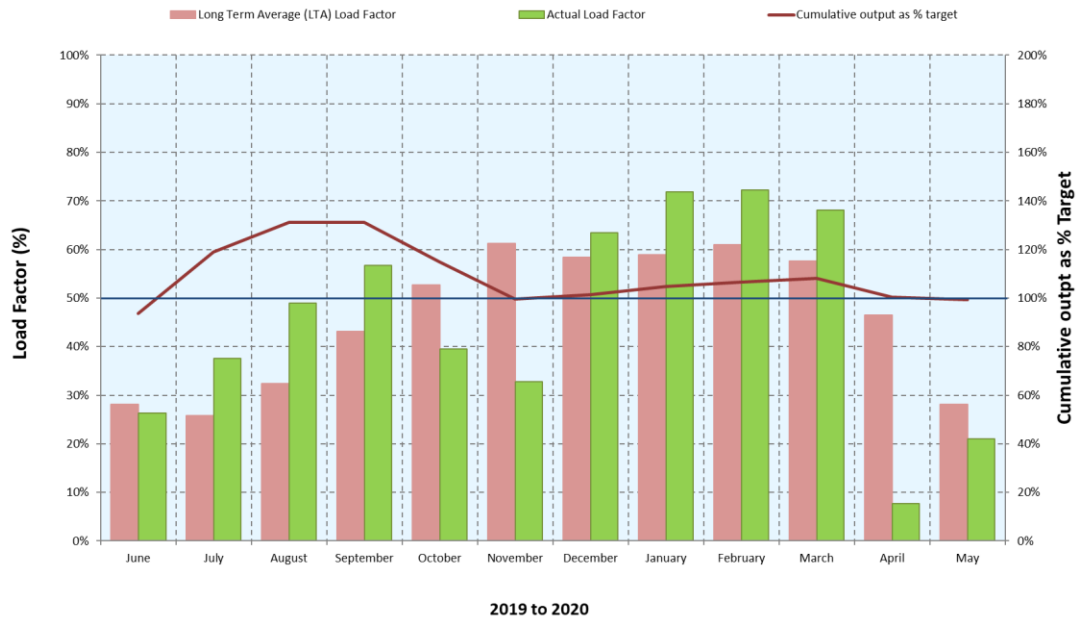
Broompower - 2018 to 2019, Year 2 of Operation - Performance



2018-2019	Jun	Jul	Aug	Sep	Oct	Nov	Dec	Jan	Feb	Mar	Apr	May
Monthly Generation KWH	5684	4997	16993	45841	40874	6747	36982	37752	33860	51706	9746	12965
Monthly target to generate 405000 KWH/Y	20213	19193	24151	31056	39209	44141	43411	43851	42484	42864	33453	20975
Monthly Income	£1,236	£1,087	£3,696	£9,970	£8,890	£1,467	£8,043	£8,211	£7,365	£11,246	£2,363	£3,143
Actual Load as a % of LTA	28%	26%	70%	148%	104%	15%	85%	86%	80%	121%	29%	62%
Cumulative output as % target	28%	27%	44%	78%	85%	68%	71%	74%	75%	80%	75%	75%

2018-2019	Total
Total Generation KWH	304,147
Annual Target 405000 KWH (See Business Plan)	405,000
Annual Income (calculated from output)	£66,717
Actual as percentage target	75%

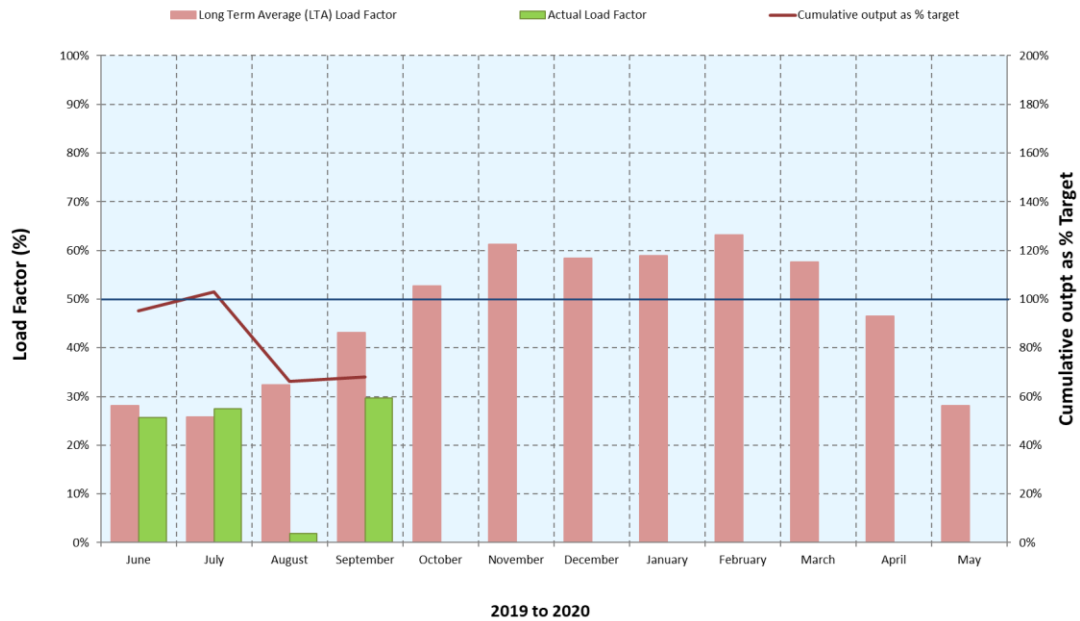
Broompower - 2019 to 2020, Year 3 of Operation - Performance



2019-2020	Jun	Jul	Aug	Sep	Oct	Nov	Dec	Jan	Feb	Mar	Apr	May
Monthly Generation KWH	18940	27989	36380	40867.8	29383.3	23624.4	47249.7	53483.9	50242.1	50630.1	5559.7	15591.7
Monthly target to generate 405000 KWH/Y	20213	19193	24151	31056	39209	44141	43411	43851	42484	42864	33453	20975
Monthly Income	£4,591	£6,785	£8,819	£9,906	£7,123	£5,727	£11,453	£12,964	£12,179	£12,273	£1,348	£3,779
Actual Load as a % of LTA	94%	146%	151%	132%	75%	54%	109%	122%	118%	118%	17%	74%
Cumulative output as % target	94%	119%	131%	131%	115%	100%	101%	105%	107%	108%	100%	99%

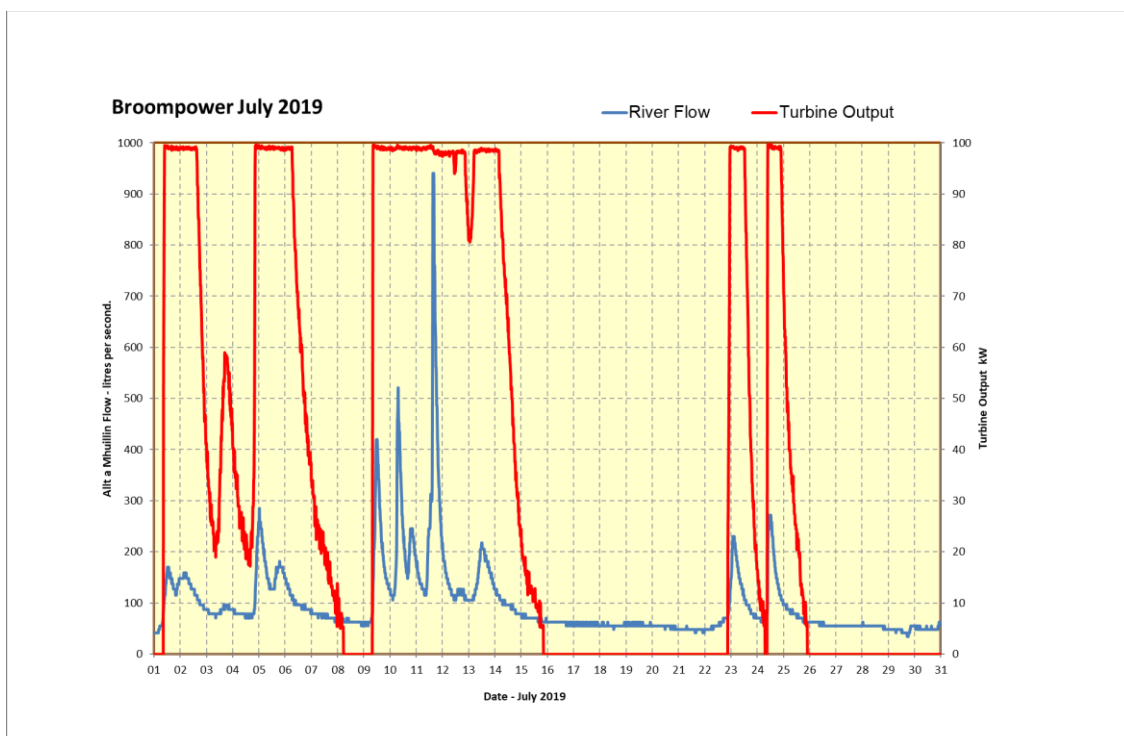
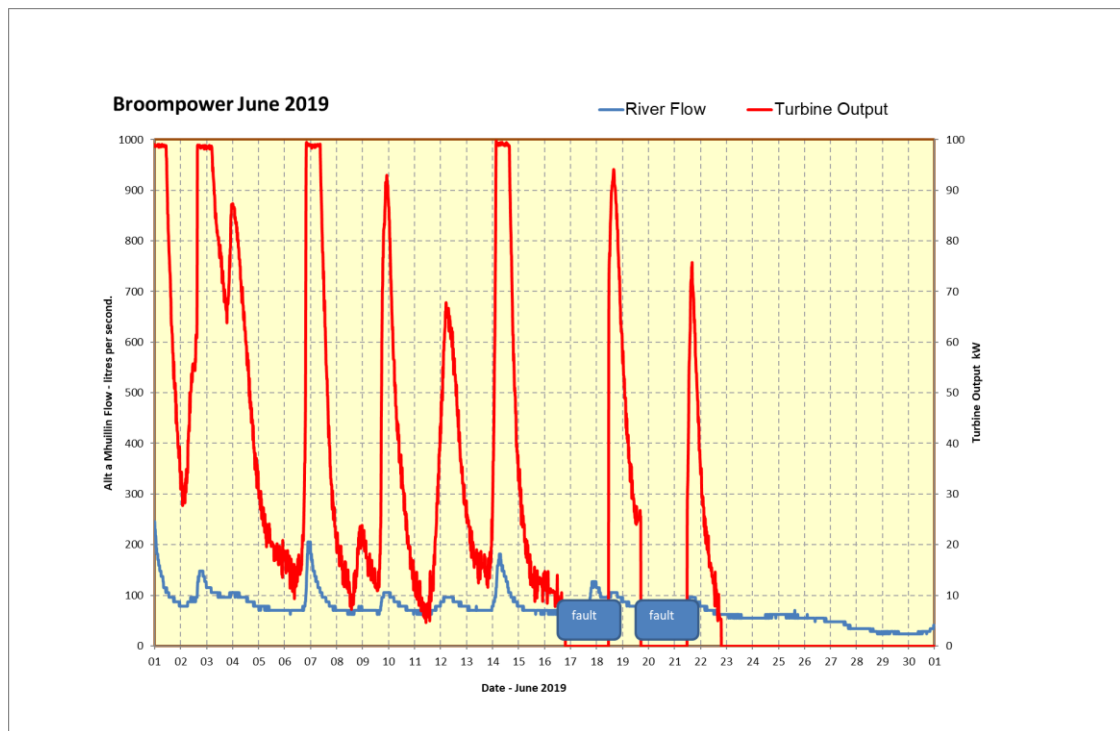
2019-2020	Total
Total Generation KWH	399,942
Annual Target 405000 KWH (See Business Plan)	405,000
Annual Income (calculated from output)	£96,946
Actual as percentage target	99%

Broompower - 2020 to 2021, Year 4 of Operation - Performance

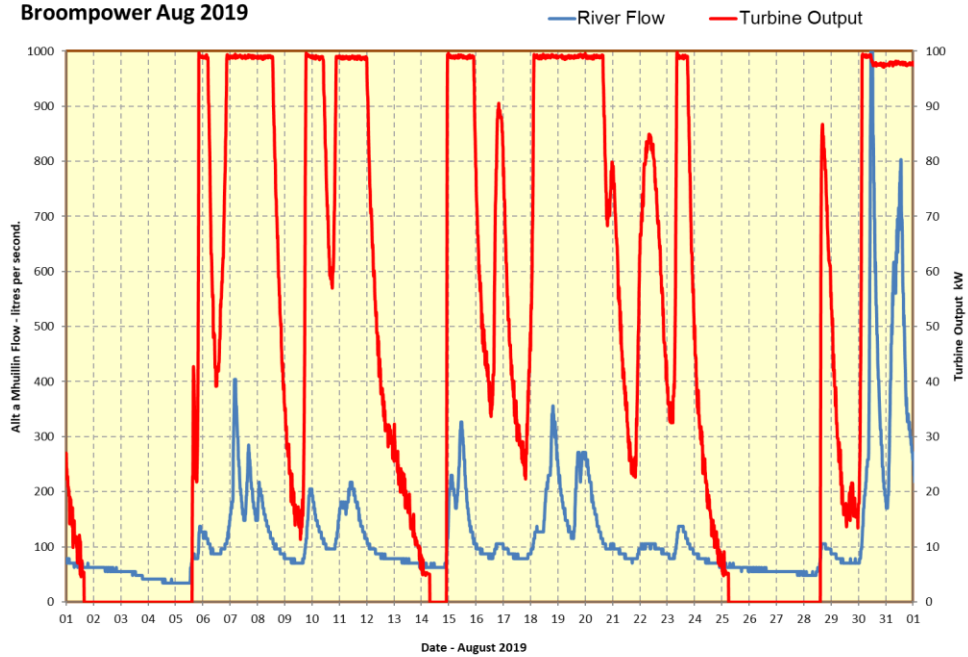


2020-2021	Jun	Jul	Aug	Sep	Oct	Nov	Dec	Jan	Feb	Mar	Apr	May
Monthly Generation KWH	18469.8	20498	1423	21353.6								
Monthly target to generate 405000 KWH/Y	20213	19193	24151	31056								
Monthly Income	£4,477	£4,969	£345	£5,176								
Actual Load as a % of LTA	91%	107%	6%	69%								
Cumulative output as % target	95%	103%	66%	68%								

2020-2021	Total
Total Generation KWH	61,744
Annual Target 405000 KWH (See Business Plan)	94,613
Annual Income (calculated from output)	£14,967
Actual as percentage target	65%



BroomPower Aug 2019



BroomPower Sept 2019

